

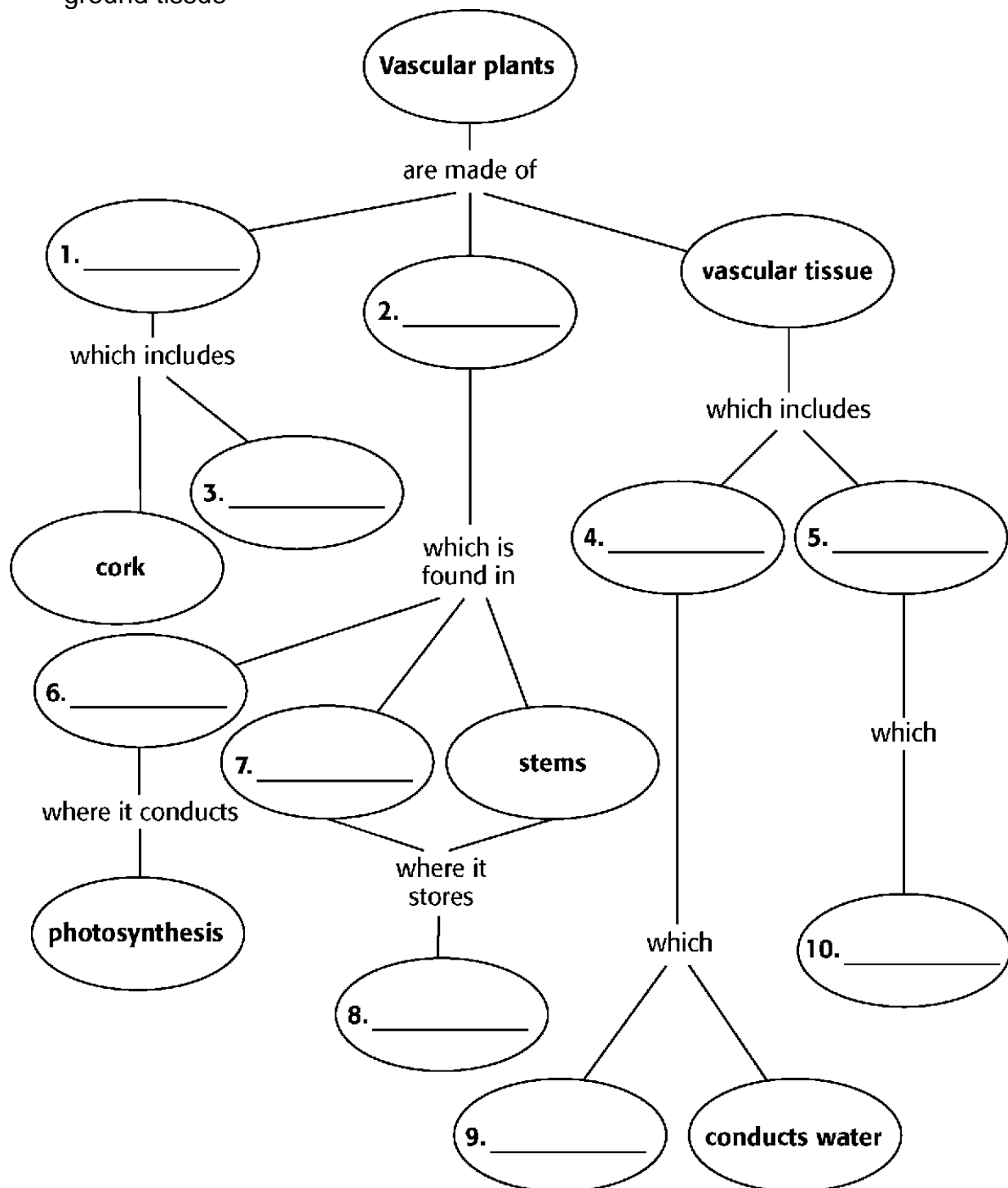
Seed Plant Concept Map

Using the terms and phrases provided below, complete the concept map showing the characteristics of vascular plants.

conducts sugar
dermal tissue
epidermis
ground tissue

leaves
nutrients
phloem

provides support
roots
xylem



Plant Taxonomy Concept Map

Using the terms provided below, complete the concept map showing the classification of plants.

whisk ferns

ferns

gymnosperms

hornworts

horsetails

liverworts

nonvascular plants

seed plants

seedless vascular plants

